

# Cells

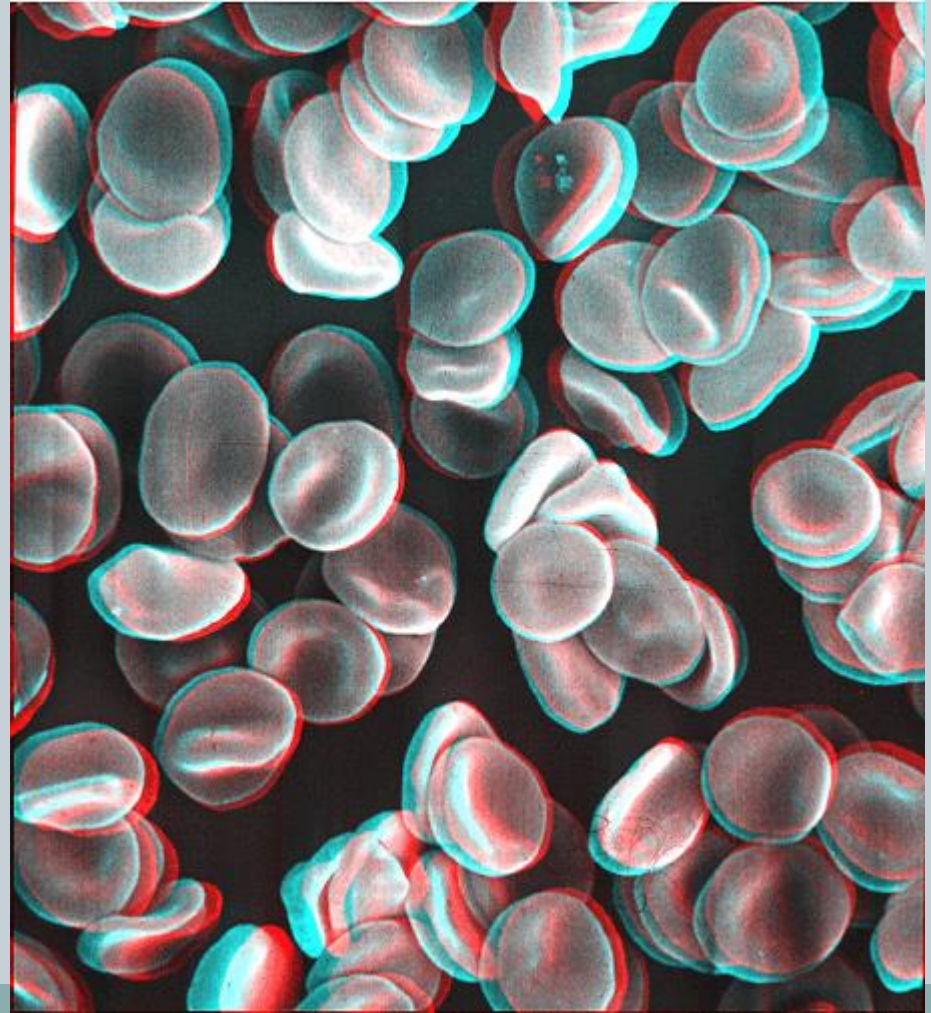


ANIMAL & PLANT

# Cells



- A cell must:
- Breathe
- Nourish itself
- Repair itself
- Reproduce
- Eliminate waste

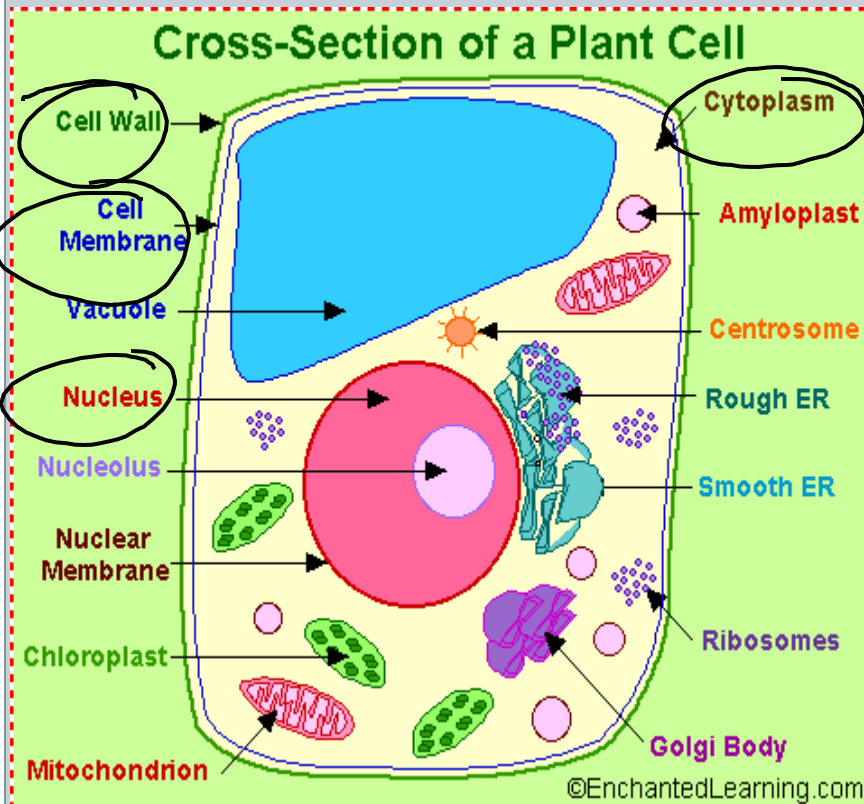


# Cells



- The internal structures of a cell are called **organelles**

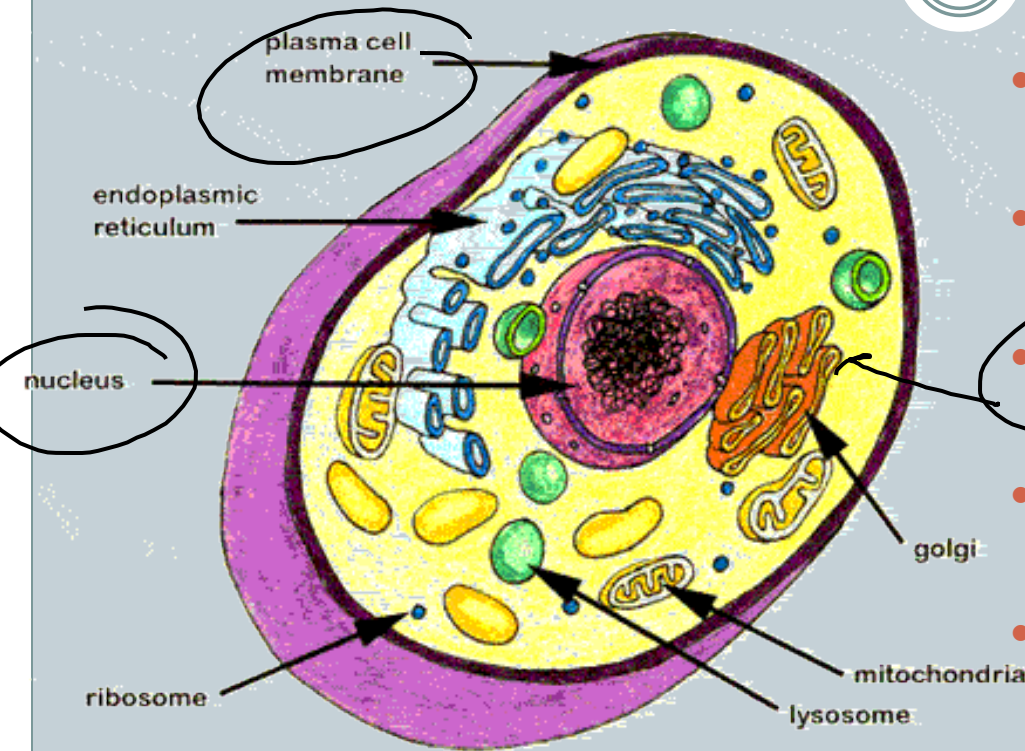
# Organelles of a plant cell (p.278)



## • Main parts

- Cell membrane: (protects cell)
- Cytoplasm: (allow flows, keeps organelles in place)
- Nucleus: (centre of cell, contains chromosomes)
- Vacuole: (stores nutrients & waste)
- Endoplasmic reticulum: (cellular transportation)
- Mitochondrion: (produces energy, cell respiration)
- Cell wall: (support for cell)
- Chloroplast: (for photosynthesis, absorbs sunlight)

# Organelles of an animal cell



- Main parts
- Cell membrane
- Cytoplasm
- Nucleus
- Vacuole
- Endoplasmic reticulum
- Mitochondrion

# How cells work



- Inputs : the things that enter the cell to make it work
- (i.e. Water, nutrients, oxygen)
- Outputs: Once the cell has used up its inputs it must remove the waste (outputs)

